



## BWSR State Cost Share Grant for FY 2011

### Fillmore Soil and Water Conservation District

**BWSR Grant Awarded**  
\$ 23,520

**Grant Period (incl. extensions)**  
From: August 17, 2010  
To: June 30, 2012

**Funds Returned to State**  
Type: contract slippage: \$38.44  
Date Funds Returned: 2/12/2013  
Type: contract cancelled: \$81.25  
Date Funds Returned: 5/15/2014

#### Expenditures by Category

As of 12/31/2014

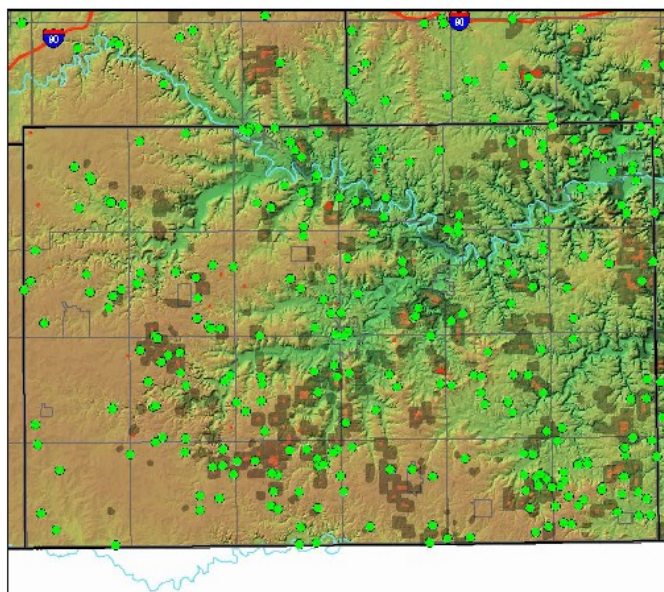
<b>Administration/ Coordination</b>	
<b>Project Development</b>	
<b>Technical and Engineering</b>	\$ 4,680.06
<b>Construction</b>	\$ 18,720.25
<b>Total Expenditures</b>	\$ 23,400.31

**PROJECT CONTACT**

Donna Rasmussen, Administrator  
507-765-3878, ext 3  
donna.rasmussen@fillmoreswcd.org

*Prepared by Fillmore SWCD  
for BWSR Website Reporting Requirements*

### Map of Conservation Practices in Fillmore County (as reported in eLINK for the MN Board of Water and Soil Resources)



#### Outputs and Outcomes

**Outputs:** Two waterways (plus one funded in part with FY10 funds and reported with FY10 projects) totaling 1870 feet, 1000 feet of terrace with underground outlet, and six farmstead windbreaks were installed in 2011. In 2012, two grassed waterways, totaling 1,590 feet, 800 feet of terrace with underground outlet, and five farmstead windbreaks were completed. One contract remained active in 2013 and into 2014, which was then cancelled in 2014. The grant was closed out on June 15, 2014.

**Outcomes:**

Water pollution reduction estimates for these projects:  
Reduction in Soil Loss = 46.5 tons per acre per year



Waterway needs are often evident after a rain event. A waterway's purpose is to:

- convey runoff from terraces, diversions or other water concentrations without causing erosion or flooding.
- reduce gully erosion.
- improve water quality.