



This newsletter is a joint effort from the following organizations:



John Zinn  
Grazing Specialist  
john.zinn@mn.usda.gov  
507-289-7454 ext. 115

Lance Klessig, Caledonia Ofc.  
Lance.Klessig@mn.usda.gov  
507-724-5261 ext. 3



Dean Thomas,  
Grazing Specialist and Area 6  
Soil Health Technician  
dean.thomas@fillmoreswcd.org  
dean.thomas@mn.nacdnet.net  
507-765-3878, ext #3



Fillmore & Houston Counties  
Michael Cruse  
mjcruse@umn.edu  
Fillmore: 507-765-3896  
Houston: 507-725-5807

Winona County Extension  
Jake Overgaard  
over0128@umn.edu  
507-457-6440



Minnesota  
Grazing Lands  
Conservation  
Association



*If you would like to receive this newsletter by email please send a request to:*  
**ruesi001@umn.edu**

## Try the Latest Version of Web Soil Survey

By John Zinn, Grazing Specialist, NRCS

Web Soil Survey is the NRCS digital reference for soils information. To access the site go to <http://websoilsurvey.sc.egov.usda.gov/App/HomePage.htm>. Click on the "Start WSS"



You can search for your location several ways and now there is a convenient address based search. Once you get to your location you define an "Area of Interest". When you click on the Soil Map tab you will generate a soil map of the Area of Interest. The Soil Data Explorer Tab allows you to find out about many soil properties.

One tab that I use a lot when planning grazing systems is the Suitabilities and Limitations for Use. One of the choices in this section is "Vegetative Productivity". This section has additional choices for different crops including different forage species.

In addition to Vegetative Productivity there are other sections such as Building Site Development, Construction, Disaster Recovery Planning, Land Classifications, Land Management, Military Operations, Recreational Development, Sanitary Facilities, Waste Management and Water Management. Within each of these sections there are numerous choices. This tool has many uses and if you are considering purchasing or renting new land this can be a very useful guide.

# FIELD DAY ~ DIRT RICH

Soil expert and farmer, Dr. Allen Williams, joins dairy grazer Olaf Haugen for a practical discussion of how to increase soil biological activity on row crop fields - reducing inputs and increasing profits in just 1-3 years.



**TOPICS:** ASSESSING YOUR SOILS,  
MANAGEMENT EXPERIMENTS,  
WHAT RESULTS TO EXPECT

**WHEN:** 1:30-4:30 P.M.  
MONDAY, MAY 23, 2016

**WHERE:** SPRING SIDE FARM  
12620 DEER ROAD, CANTON, MN.  
*(We'll caravan to a second site in Choice, MN.)*

**ADMISSION:** \$5.00/person

**RSVP REQUESTED:** CAROLINE@LANDSTEWARDSHIPPROJECT.ORG OR  
(507) 523-3366 EXT. 102

Hosted by: Land Stewardship Project  
The Pasture Project  
Practical Farmers of Iowa  
Sustainable Farming Association

---

## Grazing School in Grand Rapids August 26 & 27, 2016

University of Minnesota Extension, The Minnesota Grazing Lands Conservation Association and the Natural Resources Conservation Service have teamed up to put on a very hands on grazing training at the Grand Rapids Experiment Station this year. Be sure to put this on your calendar because this two-day workshop is an excellent opportunity for farmers who would like to learn more about how they can implement grazing on their operation as well as helpful ideas for managing your pasture for maximum profit and efficiency.

The session will start at 12:30 on Friday, August 26  
at the **U of M Main Station**  
U of M North Central Research & Outreach Center  
1861 E HWY 169  
Grand Rapids, MN 55744

Instructors include experienced Grazier members of the Minnesota Grazing Lands Conservation Association, University of Minnesota Extension faculty, and Natural Resources Conservation Service Grazing Specialists. The topics have been set and include: Plant growth and response to grazing, Soil fertility, Forage quality to meet animal needs, Forage Plant and Weed Identification, Resource Inventory, Grazing Math, an Introduction to rotational grazing principles, Setting up your system, and Clipping for yield estimation and converting to stocking rate. In addition, you'll have the opportunity to network with other graziers and work with faculty to develop a grazing plan for your farm.

Participants will be setting up paddocks with portable fence for Cow Calf pairs and evaluating the results over the two days. There will also be demonstrations of Soil Temperature Monitoring, the Rainfall Simulator, and there will be Forage and Cover Crop plots to view and discuss.

The class size is limited to 30 students because we want to encourage discussion and questions. In fact we will be holding individual consultations with the Instructors on Friday night.

We are reserving a block of rooms at a nearby hotel for your convenience. When the location of these rooms is finalized we will send out that information.

The cost is \$100/person, and \$50 for each addition person from the same farm. Current Grazing Lands Conservation Association (GLCA) members receive a \$10 discount.

For more information,

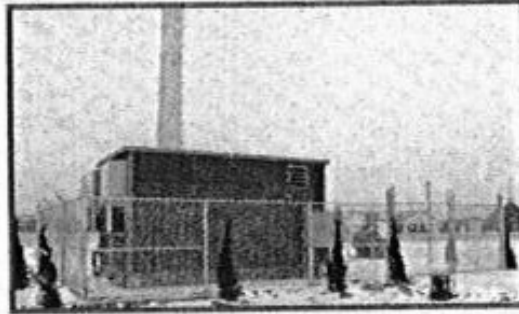
For more details and registration information contact John Zinn at 507-289-7454, EXT. 115 or Dean Thomas at 507-765-3879 EXT 128, Debbie Thooft at 507-865-4436 or visit [www.mnglca.org](http://www.mnglca.org) or contact .

This program is a cooperative effort between UMN Extension, GLCA, MN State Cattlemen's Association, and the NRCS.

# HORSMAN FENCE CO.

**Custom Built Fencing**  
*Residential and Commercial*

Athletic Fields  
Cell Towers  
Chain Link



Farm Fencing  
Vinyl  
Wood

**Kevin**

Bus.: 507-281-4420

Fax: 507-932-5390

Cell: 507-259-6312

32147 Gunflint Rd.  
Utica, MN 55979

**Free  
Estimates**

«Name»  
«Address»  
«City»

Address service requested

University of Minnesota Extension  
Fillmore County  
902 Houston Street NW, #3  
Preston MN 55965

Nonprofit Org.  
U.S. Postage PAID  
Preston MN 55965  
Permit No. 36