

Northern Red Oak

Quercus rubra



Mature



Native Range

General Attributes

Type	Deciduous Tree
Height	60 - 80 Feet
Spread	40 - 50 Feet
Form	Rounded
Utility Lines	Incompatible
Growth Rate	Medium
Life Expectancy	Long
USDA Zone	3 - 8
Root Pattern	Deep Lateral

Flowers/Foliage/Fruits

Flower Color	Brown
Flower Season	Spring
Fruit	Nut
Fruit Color	Light Brown
Fruit Season	Fall
Summer Texture	Medium
Winter Texture	Medium
Spring Foliage	Green
Summer Foliage	Green
Fall Foliage	Red
Winter Foliage	Bronze

Plant Community

Sun	Full Sun, Partial Sun
Orientation	North, East
Soil Texture	Sandy Loam to Clay
Topography	Upland
Plant Community	Forest
Succession	Climax
Origin	MSA Zone 1, MSA Zone 2, MSA Zone 3, MSA Zone 4, MSA Zone 6, Minnesota, North America

Soils

Salt Spray Tolerance	Sensitive
Soil Salt Tolerance	Moderate
Compaction Tolerance	Moderate
Water Table	30 Inches
Drainage	Moderate
Flood Tolerance	
Drought Tolerance	Sensitive
Moisture Regime	Moist, Wet
pH	4.0 through 6.5
Windbreak Group	

Northern Red Oak

Quercus rubra



Planting Ease

Spring Bareroot	
Fall Bareroot	
Spring Container	Easy
Fall Container	Easy
Spring Seed	
Fall Seed	

Maintenance

Formal	Moderate
Informal	Low
2,4-D Tolerance	Sensitive
Dicamba Tolerance	Sensitive
Picloram Tolerance	Sensitive
Clopyralid Tolerance	
Artificial Light	
Sulfur Dioxide	Tolerant
Ozone Tolerance	Tolerant
Hydrogen Flouride	Moderate
Nitrogen Oxide	Tolerant

Pests/Problems

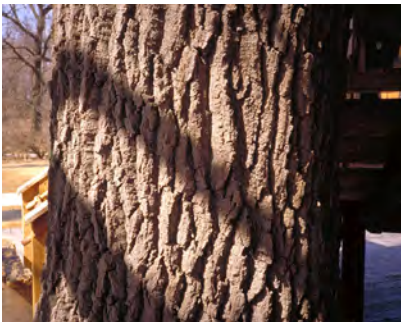
Allergens	males 8, females 8
Invasiveness	Non-Invasive
Toxicity	Has toxic Stems, Leaves
Cold Injury	Not Susceptible
Storm Damage	Not Susceptible
Biological Control	
Mechanical Control	
Chemical Control	

Miscellaneous

Wildlife Rating	High
Insect Concerns	Major
Disease Concern	Minor
Wildlife Concerns	

Comments

Susceptible to oak wilt. Withstands city conditions. Will develop chlorosis in high PH soils. Leaves persist into winter. Bare root plants require sweating; not recommended for fall planting. Toxicity reported with browsing livestock.



Bark



Dormant

Northern Red Oak

Quercus rubra



Fall



Flower



Fruit



Immature



Leaf